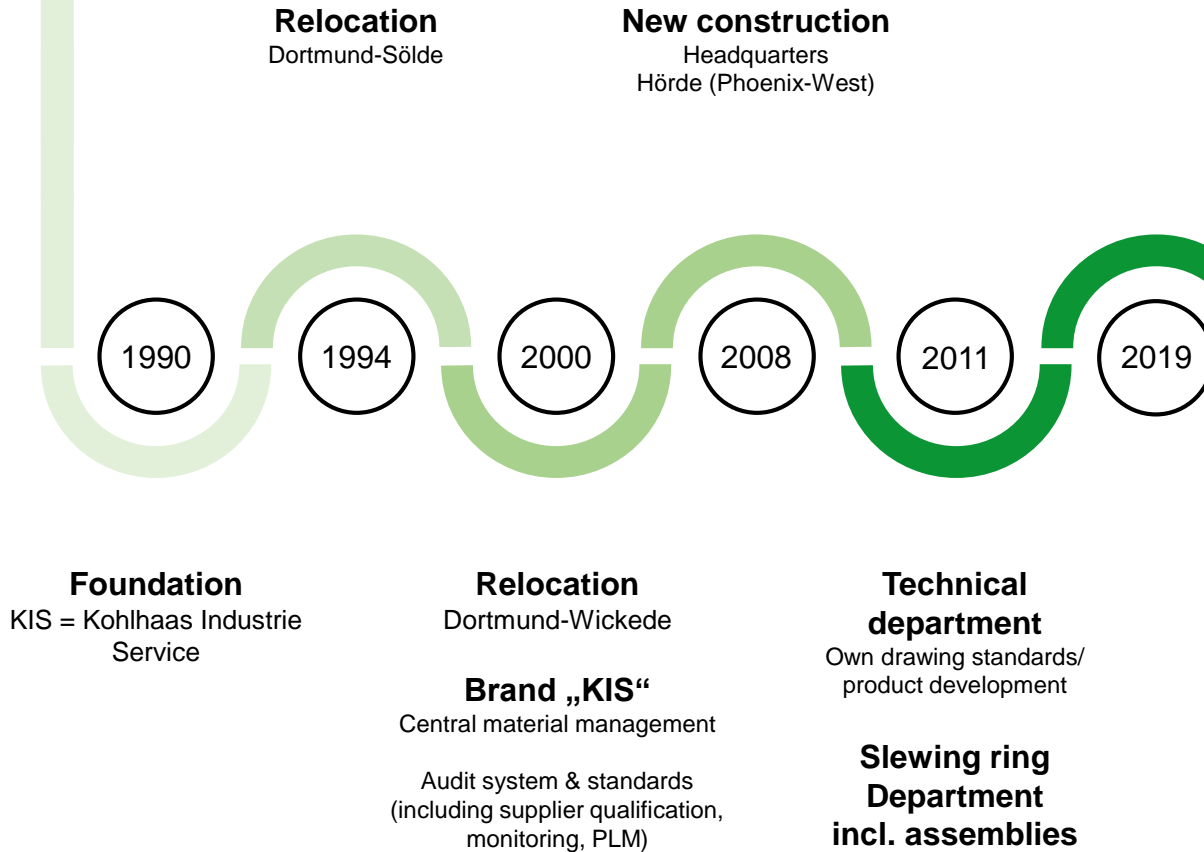




Präsentation for Ufuk Rulman Ltd. Sti.



History



Building Extension
New measurement laboratory, Packaging line,
Prototype workshop, mechanical area for individual customization/Special items
Assembly line for components/modules, software-supported lifetime calculations



KIS in numbers



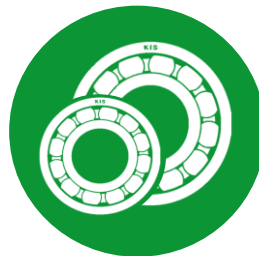
Employees
80



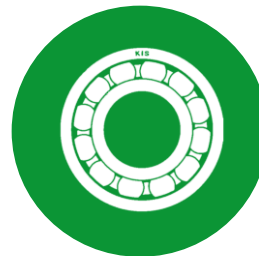
Sales representatives
15



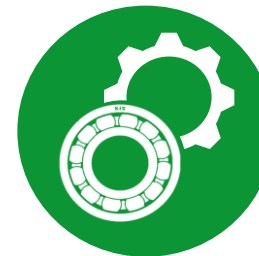
Customers in 40 countries
1.050



Available items
9.500



Total number of items
2.500.000



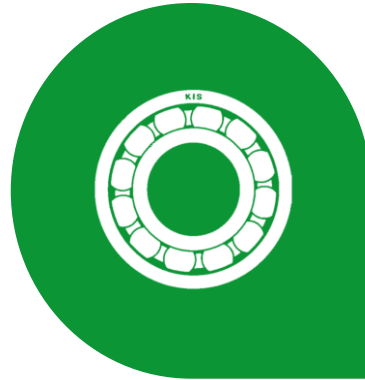
Special bearings
5.500

Product range



Bearings

Deep groove ball bearings
Spherical roller bearings
Cylindrical roller bearings
Tapered roller bearings
Self-aligning ball bearings
Needle bearings
Track rollers
Stud type track rollers
Yoke type track rollers

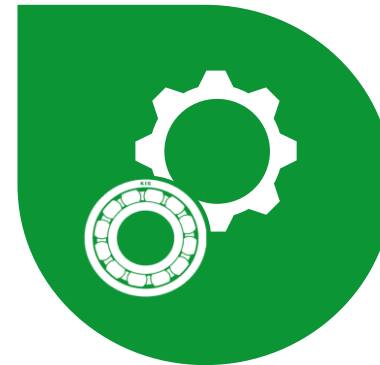
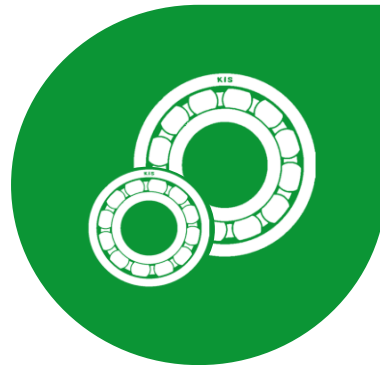


Slewing Rings
Ball bearing slewing rings
Roller bearing slewing rings

Combined Bearings
Drawing Bearings

Drawing parts

Bearings
Shafts
Housings



Assemblies
Bringing together
bearings and
machine elements

Locations



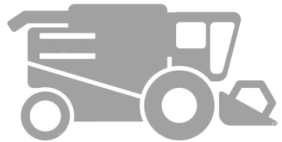
Headquarters:
Germany (Dortmund)
PR China (Shanghai)
Singapore



KIS sales representatives:
Netherlands Spain
Greece Turkey
Poland Russia
India Brazil
USA



Application areas



Agricultural industry



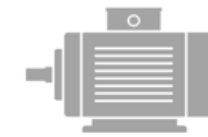
Robot Industry



Wind technology



Automotive Engineering



**Transmission/Pumps
Electric motors**



Crane construction



Packaging industry



**Food/
Beverage industry**



Railway Technology



Intralogistics

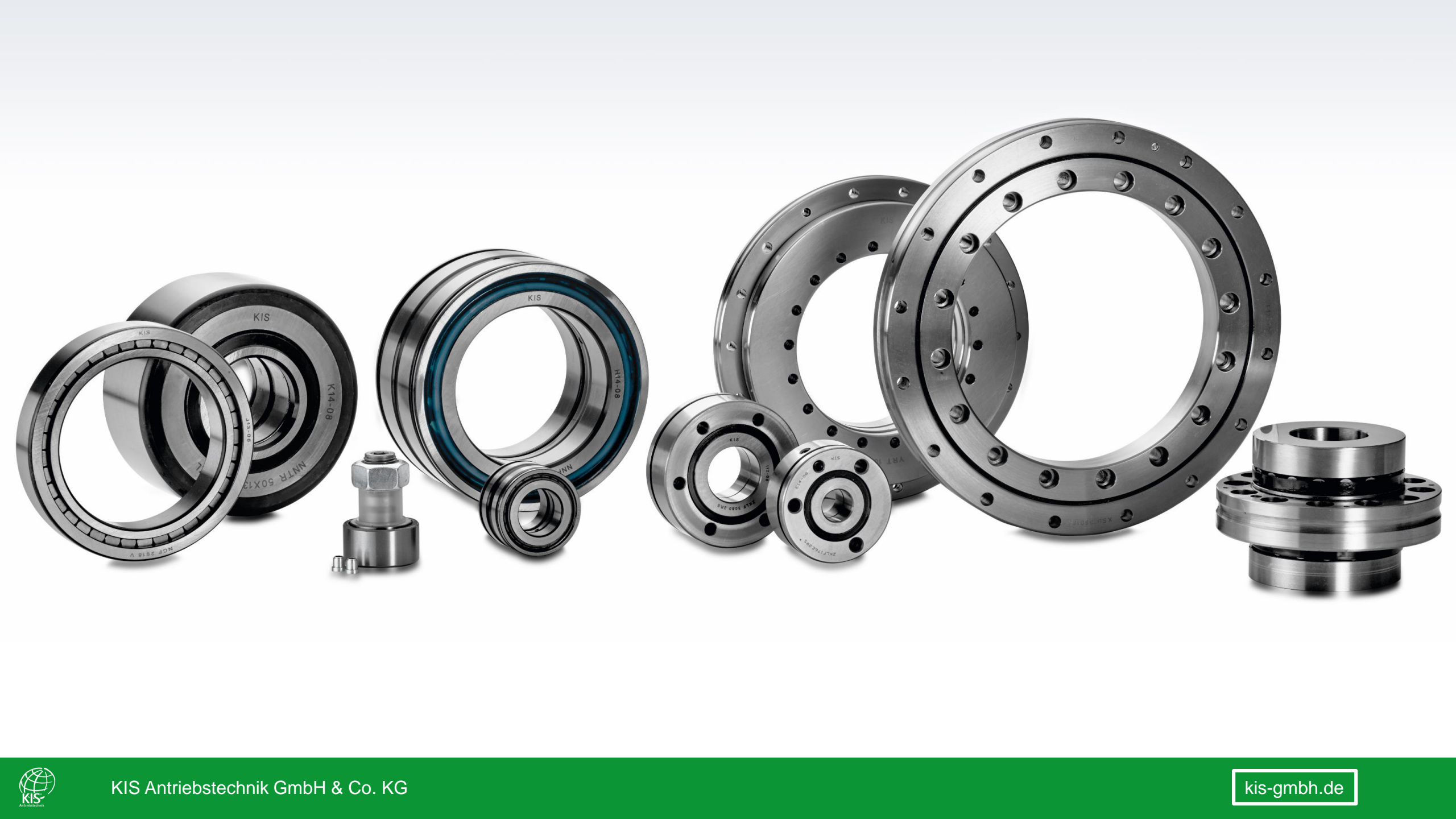


General mechanical engineering



Construction machinery

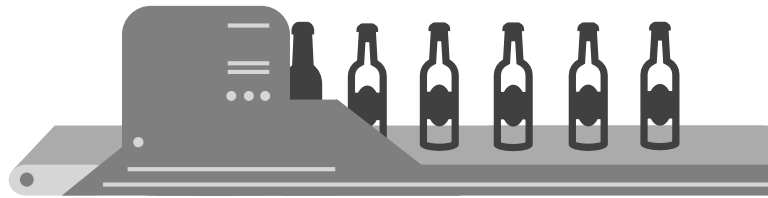






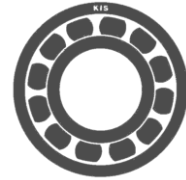


Bearings for the food industry



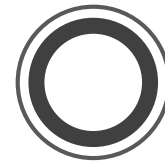
Material

Stainless Steel (e.g. AISI 316,420,440,440C ...)



Bearing range

Ball bearings, roller bearings, housing units...



Sealing

Material (e.g. NBR, VITON ...) food grade structure (low friction, increased sealing effect ...)

Food-grade grease
NSF-Approval (H1 ...)
FDA-Conformity



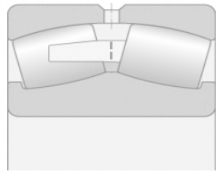
Spherical roller bearings



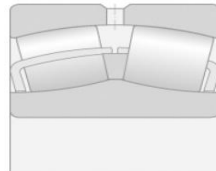
Manufacturing possibilities

- Special dimensions
- Special bearing clearance values
- Material optimisation according to operating temperature
- Inner structure optimised for higher load capacity
- Coating for longer lifetime

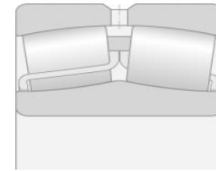
...



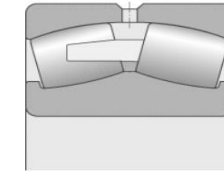
CA (MB/MA)



C/CC



EC



acc. to drawing



Cylindrical roller bearing



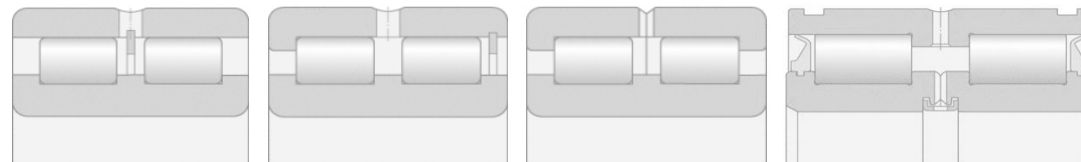
Manufacturing possibilities

- Special dimensions
- Special bearing clearance values
- Material optimisation according to operating temperature
- Cage according to operating requirements
- Design optimized for extreme loads (e.g. breakaway torque, displacement ...)
- Coating/surface treatment for longer life and reduced friction

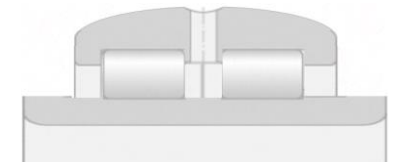
...



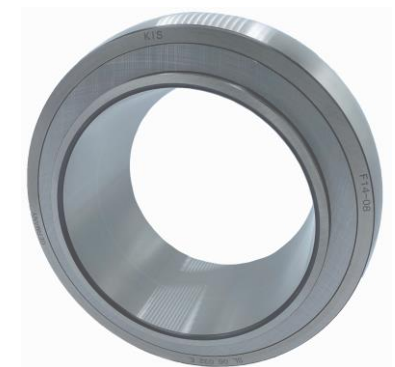
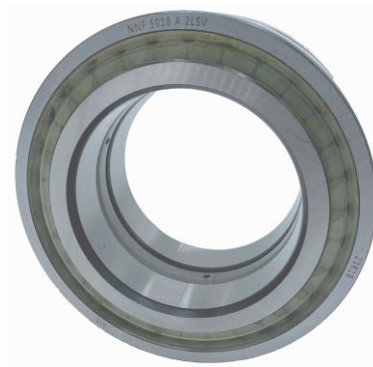
NU N NJ NUP NJG NCF



NNCL NNCF NNC NNF



acc. to drawing



Track rollers/Stud type track rollers for intralogistics



Manufacturing possibilities

Special dimensions
Coating options (e.g. ZN,ZN-NI,WC/C)
incl. premounted grease nipple
Surface treatment (burnishing)

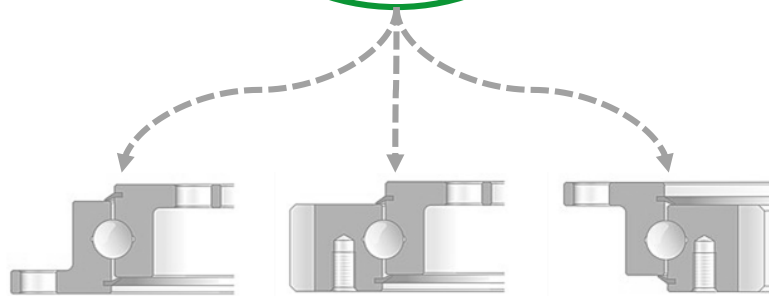
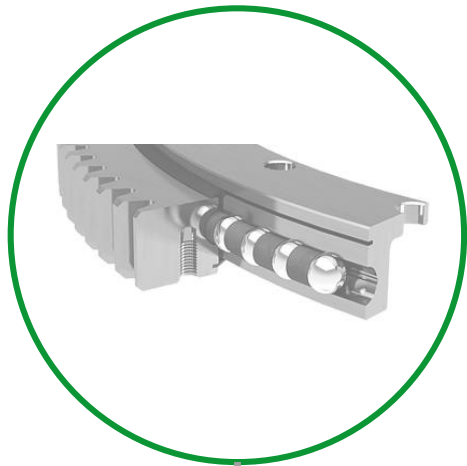
...



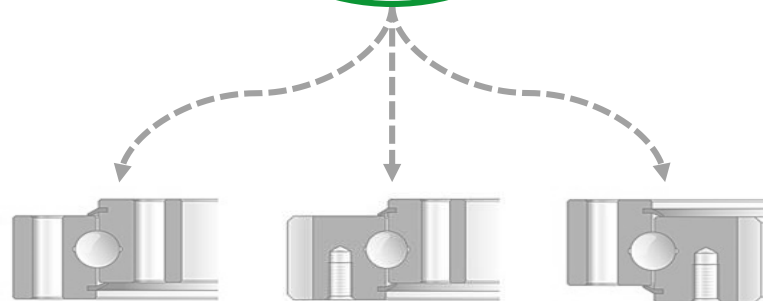
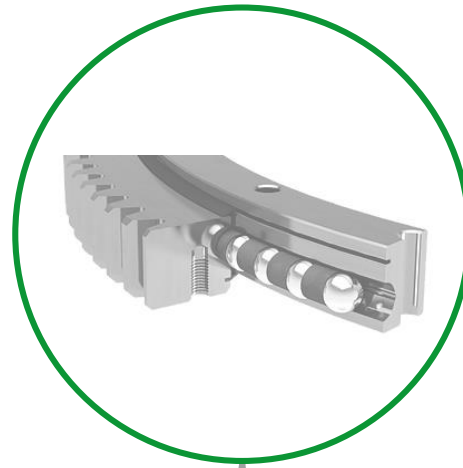
Ball bearing slewing ring



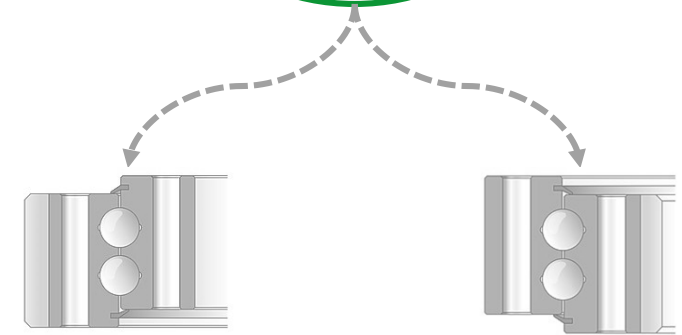
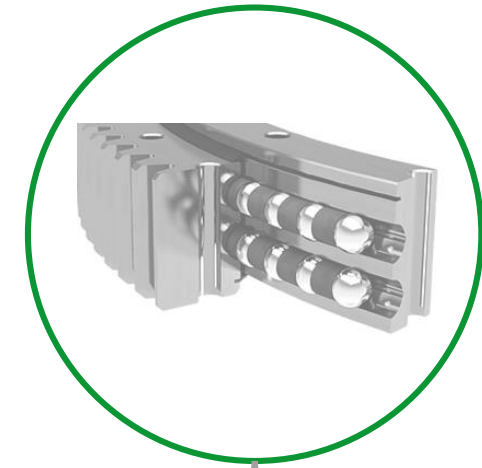
With flange



Without flange



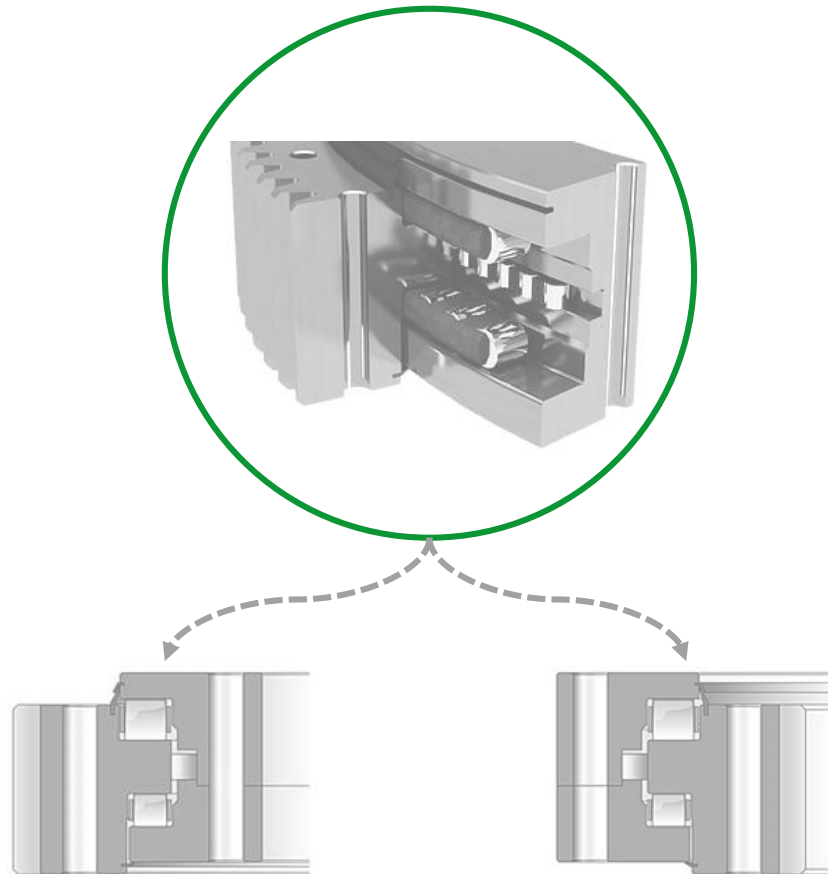
Double row



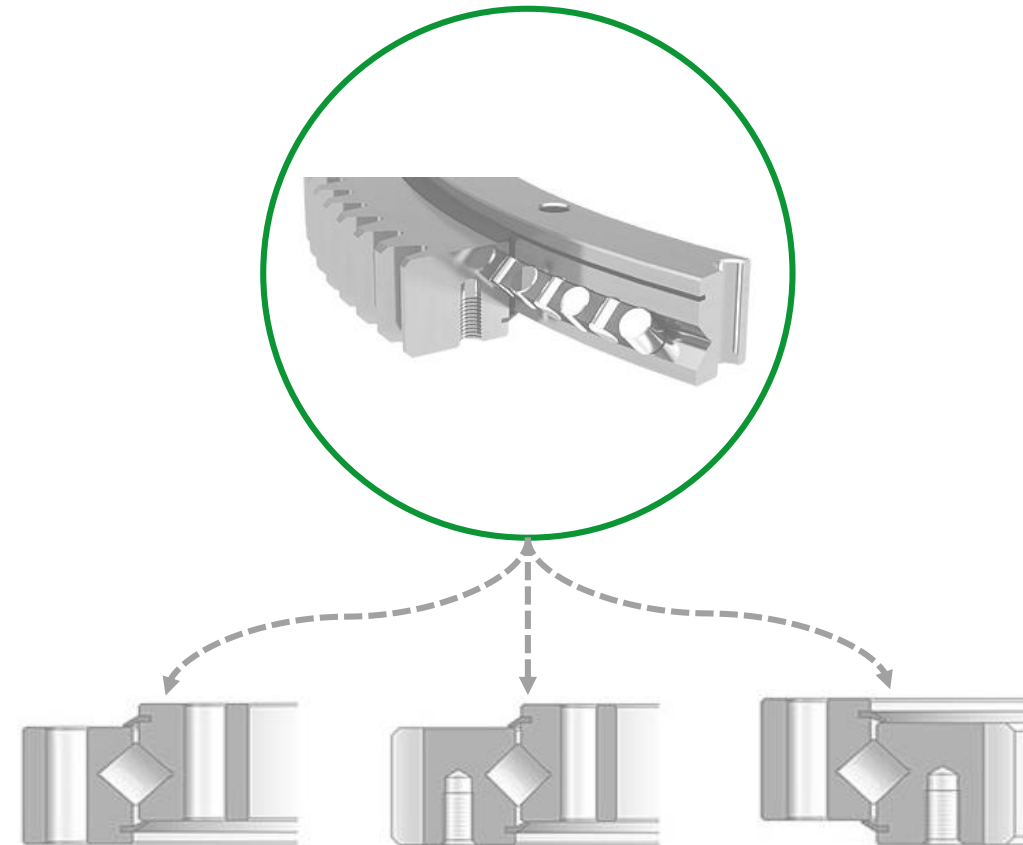
Roller bearing slewing ring

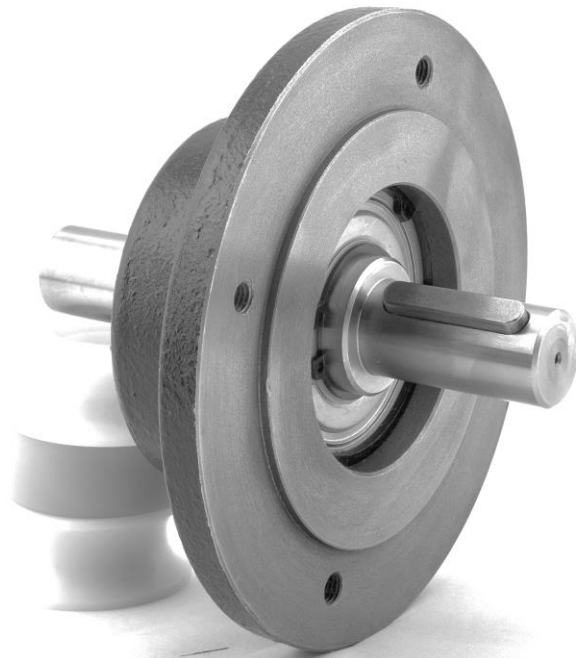


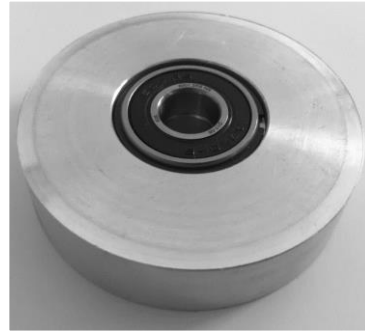
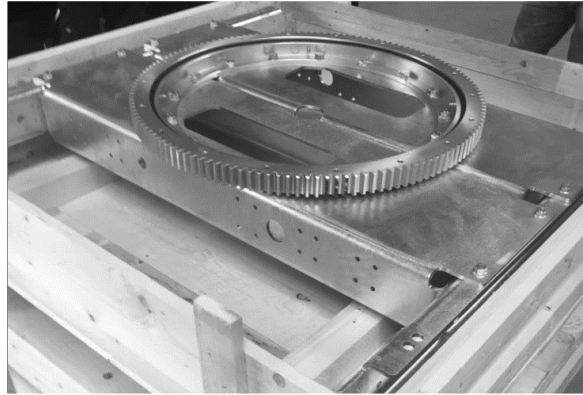
Three-row roller bearing slewing rings



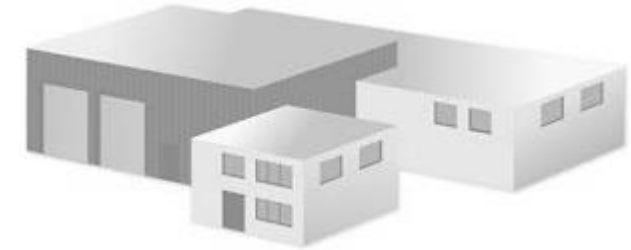
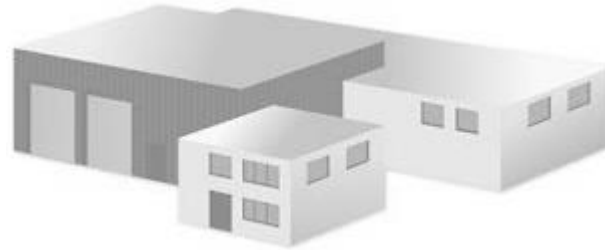
Crossed roller bearings







Quality inspection



Partner plant

production-accompanying
batch testing

direct control of the
Processing stage

Final acceptance/on-site audits
(slewing ring 100%)

KIS Bearing Technology (ASIA PACIFIC) Co. Ltd.

Quality inspection according to
AQL standard

Test level III

KIS Antriebstechnik GmbH & Co. KG

Individual quality inspection according
to customer-specific/internal
Requirements

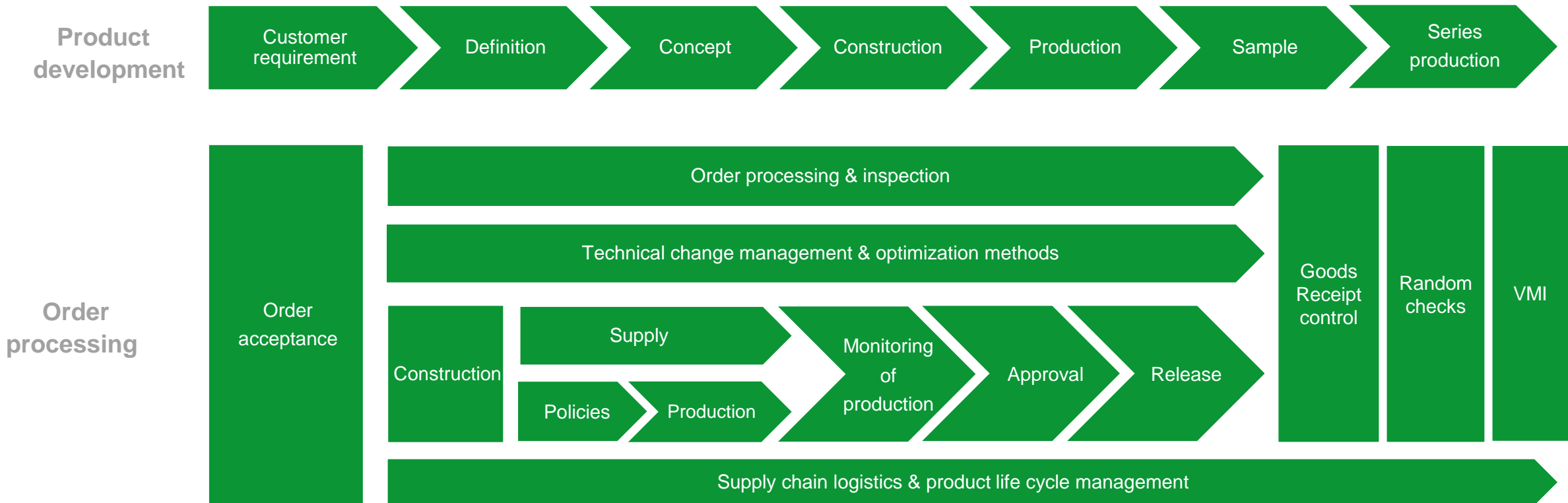
Incoming goods inspection
(slewing ring 100%)

Individual EMPB

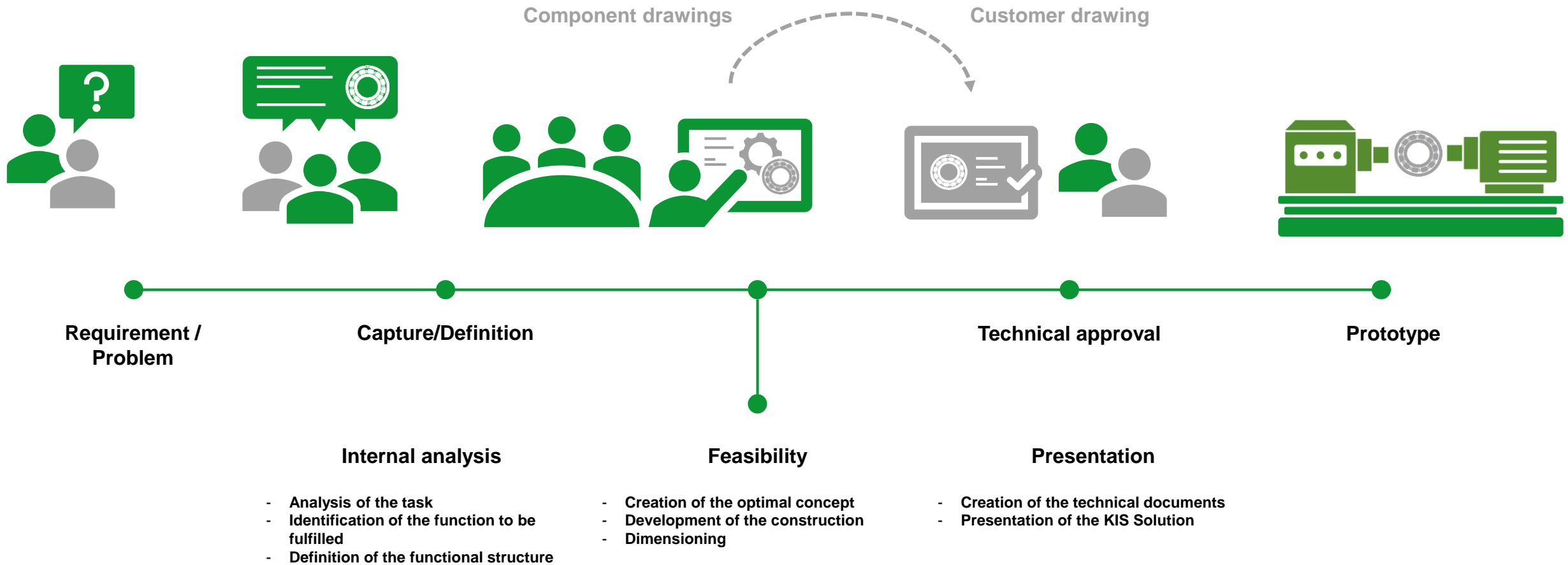
Process-Performance Management



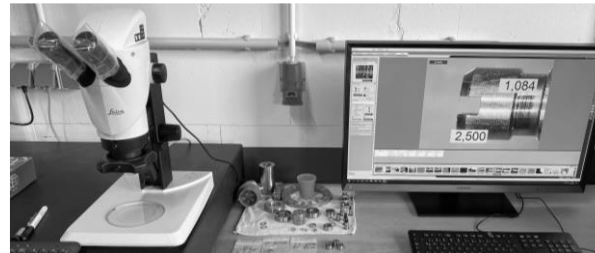
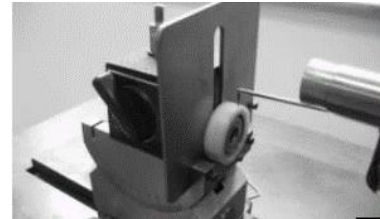
A company-wide connected process performance management with standardized quality assurance system



Construction (Prototype)



Analysis and product testing



Certified quality assurance in Dortmund according to

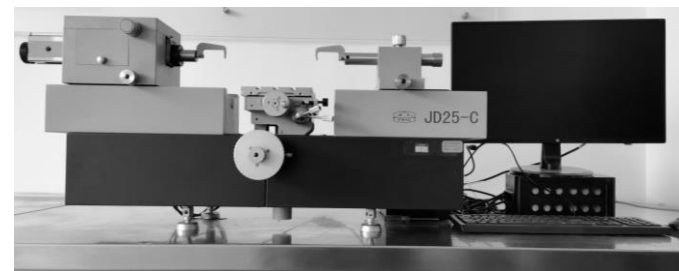
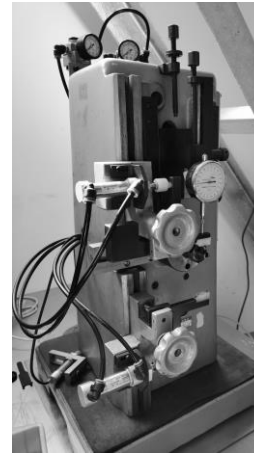
Quality Management System : DIN EN ISO 9001
Environmental Management System : DIN EN ISO 14001



The following product tests are performed:

- ✓ Hardness of materials
- ✓ Chemical analysis
- ✓ Dimensional inspection
- ✓ Material Analysis
- ✓ Damage analysis
- ✓ Roundness test
- ✓ Functional test
- ✓ Noise & vibrations
- ✓ Visual control
- ✓ Lubricant chemistry
- ✓ Surface condition
- ✓ Microscope Investigations
- ✓ Microsection analysis
- ✓ Haptics test

Analysis and product testing



Through **KIS Bearing Technology (Asia Pacific) Co, Ltd.** the know-how is shared between KIS Antriebstechnik and its partner plants and thus becomes a true decentralized pool for quality control

The following product tests are performed:

- ✓ Hardness of materials
- ✓ Roundness test
- ✓ Dimensional inspection
- ✓ Damage analysis
- ✓ Surface condition
- ✓ Functional test
- ✓ Noise & vibrations
- ✓ Visual control
- ✓ Material analysis
- ✓ Microscope Investigations
- ✓ Microsection analysis
- ✓ Haptics test

Batch Traceability



Our IT-supported product lifecycle management system, which is linked to our production sites, enables us to seamlessly monitor our quality standards and the production and process flow.



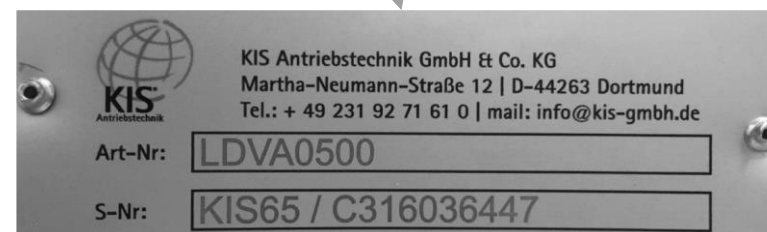
Furthermore, all products of the brand "KIS" are marked with an internal production code which allows each bearing to be identified even after installation.

Slewing rings/Large rolling bearings

KIS standard marking with nameplate

Alternative: Laser marking

Customer-specific labelling to secure your spare parts business





Thanks a lot !!

